

TRAILER NEWS



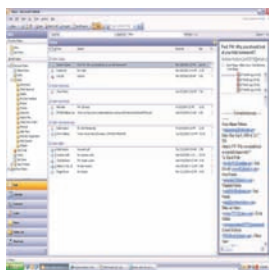
ADDRESSING 2008 STEEL PRICES

INSIDE THIS ISSUE:

<i>Advantage Series Comparison</i>	2
<i>Pro Series Comparison</i>	3
<i>Wedge Ramps</i>	4
<i>Warranty Registration</i>	4

Email List

Hudson Trailers is working to get an active email address for all of its dealers. Emails addresses will be kept confidential and are only used to send out important information and specials to our dealers. If you would like to be on our email list, please send us an email to sales@hudsontrailers.com and be sure to include your dealer name and location.



As most dealers are already aware, the steel industry has been experiencing an escalation in prices and all indicators lead us to believe this trend will continue through the end of 2008. Since the 4th quarter of 2007, price per pound of steel has increased approximately 60% in most markets. Along with the steel increases, we have also seen increases in other areas such as axles, tire & rim assemblies, and increasing surcharges on inbound freight.

At the end of 2007, Hudson Trailers worked hard to get more competitive pricing from our suppliers and as a result we were able to lower prices on several models in March of this year.

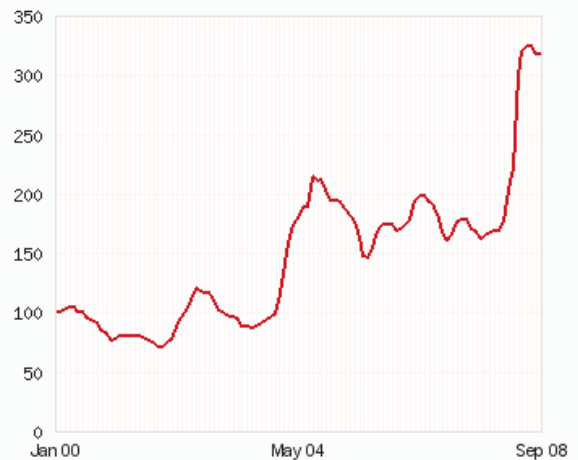
Hudson Trailers was also able to stock up on steel in the early months of this year which has allowed us to keep our prices consistent during the 1st & 2nd quarters.

Unfortunately, the most recent increases prevent us from absorbing the

entire cost increase and that is why we have been forced to gradually add a steel surcharge to the price of our trailers.

In the midst of all the price increases this year we have seen a minor drop in steel prices recently and we hope that is a trend that will continue. As always, Hudson Trailers will continue to keep our surcharge as low as possible and will monitor any changes in the steel industry. Although 2008 has been a tough year for many of us, Hudson Trailers will continue to supply our dealers with a quality built trailers and we appreciate your business and continued support.

2008 STEEL PRICE GRAPH



— SBB Flat Products Price Tracker N. America domestic, Jan 00 = 100

* Steel Prices courtesy of SBB Global

ADVANTAGE SERIES



ADVANTAGE SERIES COMPARISON

VTMGH 6 TON GOOSENECK

The Advantage Series VTMGH 6 ton Gooseneck was designed with the end user in mind and it boasts a 2' longer standard deck length than the 6 ton pintle. Although the Advantage VTMBH and the Pro Series HTMGH both come standard 20'+3' and look similar to each other, there are some differences listed below to keep in mind when comparing the two.



Standard Features:

Maximum Payload: 12,000 lb

Jack: 12,000lb w/ drop foot

Tongue: Gooseneck w/ Adj. 2 5/16th ball coupler

Deck Length: 23' (20' + 3')

Frame: 8" Channel w/ 4" Channel Crossmembers

Deck: Treated Pine

Tiedowns: Stake Pockets and Rub Rail

Differences:

Tires: 7.50-16LT **BIAS**

Axles: 6K **AL-KO** ultralube w/ brakes

Ramps: **Non** Spring Assisted

Deck Width: **102"**

Deck Height: **35"**

(Main runners are not notched out over axles giving it a higher deck height.) (see picture)

PRO SERIES COMPARISON

HTMGH 6 TON GOOSENECK

The Pro Series HTMGH 6 Ton Gooseneck trailer is one of our more popular gooseneck models. This model boast a low deck height and is considered one of our “premium” models. Listed below is some of its standard features along with its differences from the comparative Advantage Series model.



Standard Features:

Maximum Payload: 12,000 lb

Jack: 12,000lb w/ drop foot

Tongue: Gooseneck w/ Adj. 2 5/16th ball coupler

Deck Length: 23' (20' + 3')

Frame: 8" Channel w/ 4" Channel Crossmembers

Deck: Treated Pine

Tiedowns: Stake Pockets and Rub Rail

Differences:

Tires: LT235/85R16" 10PR **RADIALS**

Axles: 6K E-Z Lube **Dexter** w/ brakes

Ramps: **Spring** Assisted

Deck Width: **96"**

Deck Height: **31"**

(Main runners are notched out over axles allowing a lower deck height.) (see picture)

PRO SERIES



Hudson Bros.
Trailer Mfg., Inc.

1508 Highway 218 W
Indian Trail, NC 28079

Phone: 704-753-4723
Fax: 704-753-2011

We are on the web
www.hudsontrailers.com

CUSTOMER FEEDBACK:

"The dealer I was referred to replied the next day with someone who was very helpful and ready to answer any questions that I had. I recently purchased an equipment trailer and was impressed with my purchasing experience and trailer quality."

Thanks,

~Missy Marlette~

WEDGE RAMPS

Hudson Trailers now offers the option of wedge shaped ramps that fold over flush onto the beavertail. With the wedge shaped ramp, the end user can easily turn the beavertail into an additional 5' of loading space. This option is most popular on gooseneck trailers and can be beneficial when hauling bulky items such as bales of hay.



The option for the wedge shaped ramp is available on 9-15 ton models and there is also the option to add an additional third ramp.

For more information on this option call our sales staff at 704-753-4723.

WARRANTY REGISTRATION

There is now a new section on our website (www.hudsontrailers.com/docs/warranty.html) that allows the end user to fill out a warranty registration form. Although filling out the warranty registration form is not mandatory, it is encouraged so that Hudson Trailers will have the customers trailer information on file in case of a warranty issue.

The "Warranty Registration" form can be found on the side toolbar of the internal pages of the website (see below). Once the customer clicks on the "warranty registration" tab, it

takes them to a form where they can fill in their trailer and purchasing information.

If you have any questions regarding warranty registration, please call us at 704-753-4723.

